

# Hebrew Day Institute

## לכבוד שבת

### L'chvod Shabbat



September 8, 2006



### After School Programs By Robert Thompson

After School Clubs are forming now and activities will begin September 18, 2006. A flyer with a description of Clubs and other After School Activities has been sent home this week. Additional copies are available at Club Ed.	October 13 October 20 October 27	School Closed 5:00 pm 5:00 pm
Club ED hours are from 3:30 to 6:15 Monday through Thursday. On Fridays, Club Ed meets from the time school is dismissed (2:30 during early dismissal; 3:30 regular dismissal) until at least 1 hour before candle lighting on Fridays. Friday closing times are:	November Through January February 2 February 9 February 16 February 23 March 2 March 9 March 16 March 23 March 30	CLUB ED CLOSING AT 4:00 pm on Fridays. 4:00 pm 4:00 pm School Closed 4:30 pm 5:00 pm 5:00 pm School Closed 5:00 pm 5:00 pm
September 1 September 8 September 15 September 22 September 29 October 6	6:00 pm 6:00 pm 6:00 pm School Closed 5:30 pm School Closed	April, May and June dismissal resumes at 6:00 pm on Fridays. A charge of \$1.00 a minute is administered for pickups made after closing. The Club Ed phone number is: <b>301-649-6653.</b>



### 4th & 5th Grade Highlights By Naomi Kaplan

What a pleasure it was to see so many happy smiles on the fourth and fifth graders this past week! Hopefully, your youngsters told you of all the exciting things that we did in the various subjects.

Students who completed the required summer reading shared their reports. [Please note that the summer reading was mandatory.] Book reports in both grades will be due the third week of each month. Parents, please sign the book report instruction sheet to show that you've read it. These forms should be kept in the students' binders.

Most students did their homework in a timely manner. We strive for 100% completion of all homework. Initialing student planners each night after the assignments are finished will show your child that his or her work is important to you. I look forward to working with all parents of fourth and fifth graders to enhance our students' self esteem and academic achievement.

### Keep in Mind

#### Family Math Night For Parents and Students

Plan to attend Math Night with your children. Wednesday, September 13th, 7:00 pm (See information in this issue of Lchvod. Please RSVP.)

#### School Shirt Reminder

All students must wear their white Hebrew Day Institute shirts, with blue or khaki bottoms every Friday.



#### Hot Lunch Program

The Hot Lunch Program will begin Monday, September 11, 2006. Forms for September and October are due this week if you have not already done so.



#### In the tradition of ... Joey's Tzedakah Box

Please remember to help your children collect tzedakah money in their boxes during the week and bring it to school on Fridays.

#### Computer Forms

Please read the Technology Center permission form with your child, sign it and send it back to school. Parents and students should sign the forms. This policy is designed to keep the computers in good condition for your children to use, and to help keep them safe while using the computers.





# Giant A-Plus Bonus Bucks




Please remember to designate Hebrew Day Institute for the Giant Bonus Bucks Program. Even if you did this last year, you'll have to do it again this year because the information does not carry over from year to year.

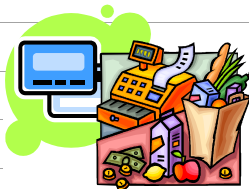
It's easy to do. Just print out and complete the designation card below. You can bring the card to school or to any Giant store. Or you can complete the information online at [www.giantfood.com/aplus](http://www.giantfood.com/aplus). You can also designate by calling 1-877-366-2668.

After you designate our school, each shopping trip at Giant using your BonusCard earns CASH for our school! Each month, the amount of CASH awarded will be updated on the Giant website. Our school will receive a check at the end of the program. The program starts October 6, 2006 and runs through April 5, 2007. The money can be used for any of our school's educational needs.

**Please be sure to designate Hebrew Day Institute using ID #00723 on the Designation Card below.**

Also, don't forget to encourage your friends and relatives to do the same. It could mean the world to our children.

A + DESIGNATION CARD	 <b>BONUSBUCKS</b> A simple way to <b>give.</b>	A + DESIGNATION CARD
	<p>Please remember, if you designated a school last year, you must re-designate your school this year. From October 6, 2006 - April 5, 2007, every time you shop with your Giant BonusCard, you'll be helping your school earn cash. Results to be posted monthly on the Giant website:</p> <p><a href="http://www.giantfood.com/aplus">www.giantfood.com/aplus</a></p>	
1. Fill in your 12-digit BonusCard number below. <input type="text"/> <input type="text"/> <input type="text"/> <input type="text"/> <input type="text"/> <input type="text"/> <input type="text"/> <input type="text"/> <input type="text"/> <input type="text"/> <input type="text"/> <input type="text"/> <input type="text"/>		
2. Fill in first three letters of your last name. <input type="text"/> <input type="text"/> <input type="text"/>		
3. Fill in the School ID number for your chosen School(s) below, (you may choose up to three schools). <input type="text"/> <input type="text"/> <input type="text"/> <input type="text"/> <input type="text"/> <input type="text"/> <input type="text"/> <input type="text"/> <input type="text"/> <input type="text"/> <input type="text"/> <input type="text"/> <input type="text"/> <input type="text"/> <input type="text"/> <input type="text"/>		
<p>If you choose more than one school your A+ BonusBucks will be evenly distributed among your designated schools. Fill in the school ID codes of ALL schools each time you add/change your designation.</p> <p>Please visit <a href="http://www.giantfood.com/aplus">www.giantfood.com/aplus</a> to view our monthly A+ Newsletter including school updates, Extra Credit information and more.</p>		



## Scrip Program

**Help Raise \$\$\$ while you shop!**  
**YOU CAN MAKE A DIFFERENCE**

You can help fundraise for Hebrew Day Institute through your everyday grocery shopping. If you shop at **Giant Food, Koshers Mart, Snider's, or Shalom's** scrip is now available! Hebrew Day Institute will receive a 5% return on your purchases. Scrip is used exactly like a debit card. All you have to do to place your scrip order:

- Call Insuk and tell her how much you want.
- Send in payment
- Allow 24 - 48 hours for our office turnaround.
- Pick up your scrip at our school office.

You can buy as much as you want, but there is a \$100 minimum. **HDI needs and counts on your financial support in order for us to keep growing.** If you have any questions regarding the scrip program, please contact me at any time. I can be reached at 301-649-5808 or [rsalzberg@hebrewdayinstitute.org](mailto:rsalzberg@hebrewdayinstitute.org). Thank you for your continued support of Hebrew Day Institute.



## Land's End and HDI

You can show off your school pride in the clothes that you and your children wear and help raise money for your school at the same time! Ordering is very easy as is outlined below.

Our Preferred School Contribution Program donates 3% of your net sales from the Lands' End School catalogs and Lands' End School web pages back to Hebrew Day Institute.

You must mention or include your Preferred School number when placing your order.

The Preferred School Number for Hebrew Day Institute is: **9001-1365-5**

Your school Logo Number is: **0646886K**

The following ordering options are available:

**Phone:** 1-800-469-2222

**Mail:** Lands' End School  
2 Lands' End Lane  
Dodgeville, WI 53595-0640 USA

**Fax:** 1-800-332-0103

Fax orders may be placed with a credit card or gift certificate. When ordering, please sign the order form where indicated and include your credit card number and expiration date.

**Internet:** [www.landsend.com/school](http://www.landsend.com/school)

### Step-By-Step Online Order Instructions

- \* Go to [www.landsend.com/school](http://www.landsend.com/school).
- \* Choose the category (Uniforms for Girls or Uniforms for Boys) and click on the appropriate size range.
- \* Select the product category (polos, pants, shorts, etc.)
- \* Select the item and click the size next to the color you would like. If you need help with sizing, you may click on the Size Chart link.
- \* Enter your preferred school number in the box that will appear after the item is ordered.
- \* To add your school logo, the logo description will appear and you may apply it by highlighting it in the drop-down menu.
- \* Place the item in your shopping bag and continue shopping or proceed to checkout.

If you have any questions, please contact your school's Advancement Director, Renee Salzberg, at [rsalzberg@hebrewdayinstitute.org](mailto:rsalzberg@hebrewdayinstitute.org).



Hebrew Day Institute  
1840 University Blvd., West  
Silver Spring, MD 20902  
Phone: 301-649-7870  
[www.hebrewdayinstitute.org](http://www.hebrewdayinstitute.org)